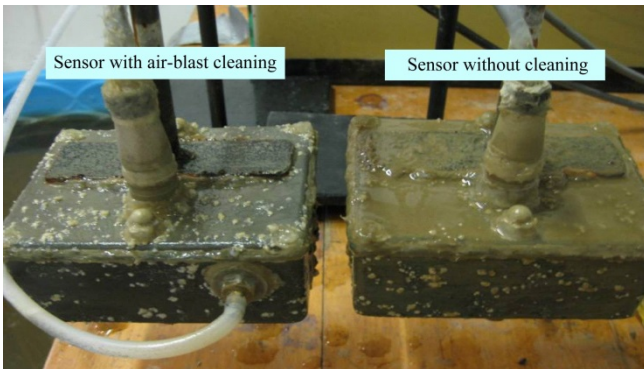
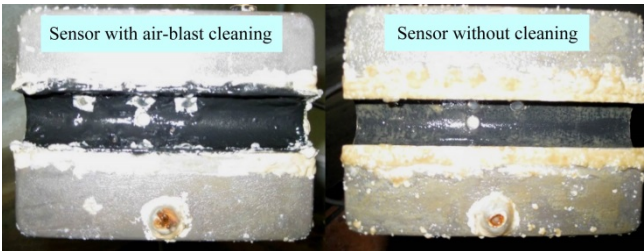




Figure 5 Photographs showing clay/silt fouling and bacterial fouling on sensors after a 40 d cleaning experiment



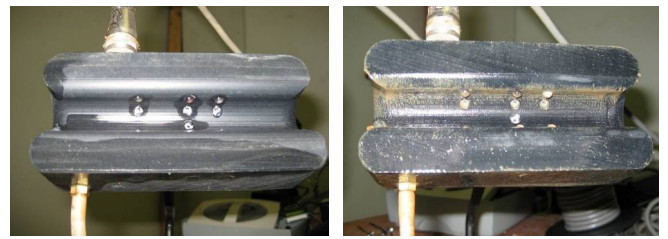
a. Bacterial fouling spots on both sensor cases



b. Clay/silt fouling only found on the tubular sensor surface without cleaning  
Figure 6 Photographs showing clay/silt fouling and bacterial fouling on sensors after 20 d



Sensor with air-blast cleaning      Sensor without air-blast cleaning  
a. Side view



Sensor with air-blast cleaning      Sensor without air-blast cleaning  
b. Bottom view

Figure 7 Photographs comparing sensors with and without air-blast cleaning after a 17 d cleaning experiment was completed



Figure 8 Aluminum sensors after working in water for 4 d

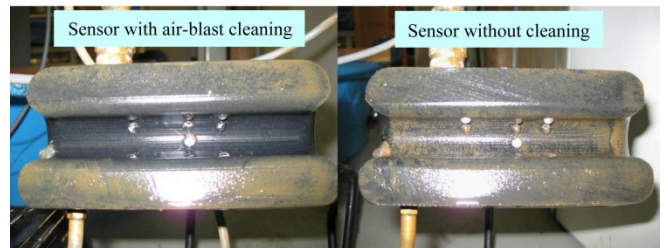


Figure 9 Polyethylene sensors after working in water for 4 d

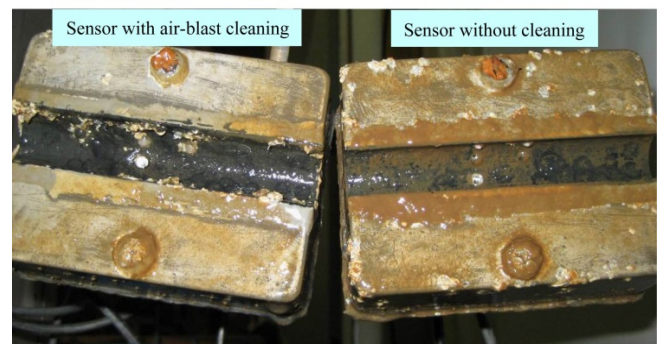


Figure 10 Aluminum sensors after working in water for 18 d